



Pickens County Quality of Life For Children and Families

Pickens County Family Connection

Wednesday, December 10th, 2014

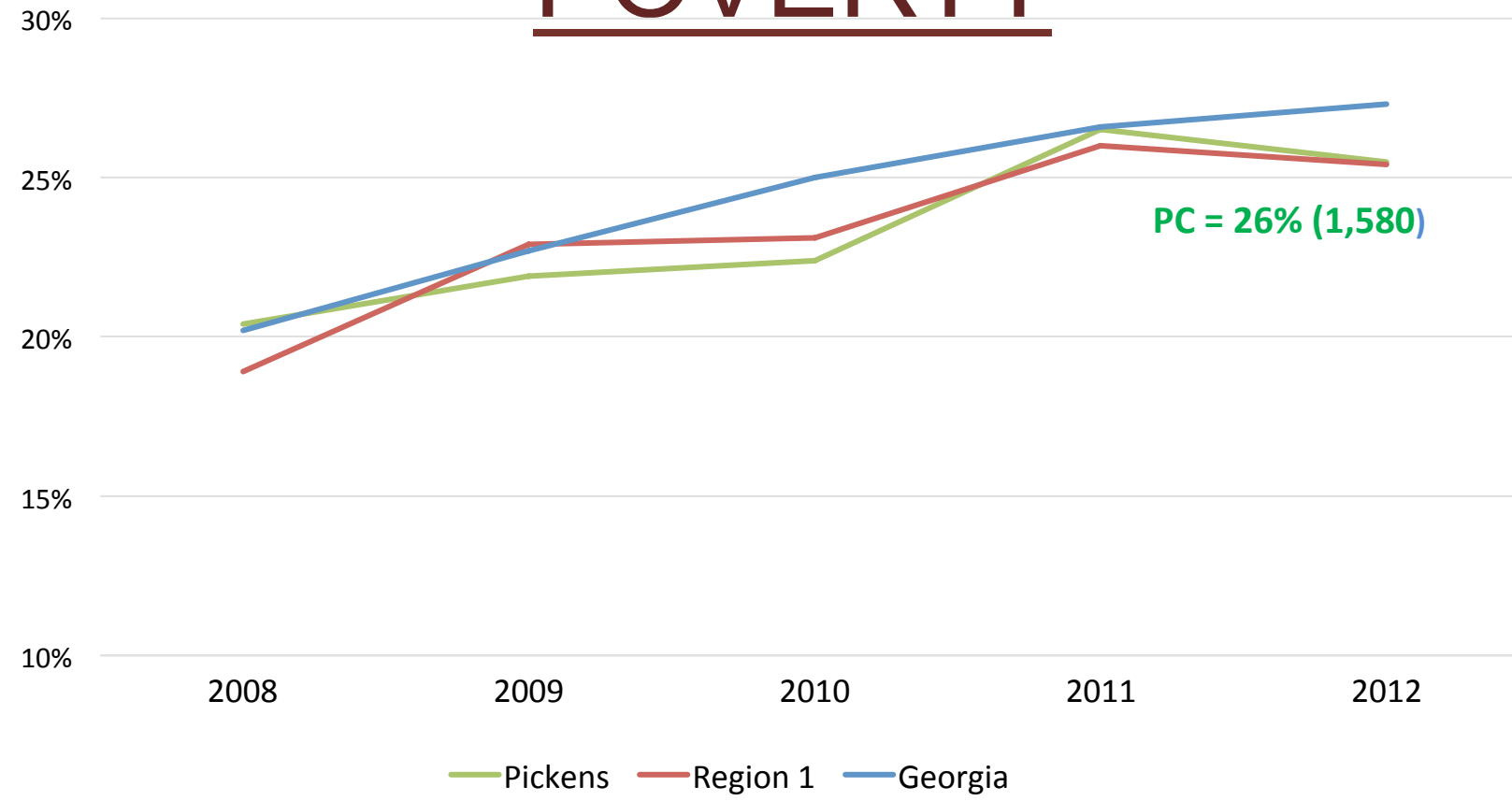
* **Kids Count Data Source:** KIDS COUNT is a project of the [Annie E. Casey Foundation](#) Tracks the well-being of children in the United States by providing high-quality data and trend analysis through its KIDS COUNT Data Center.

GENERATIONAL POVERTY

- State-wide 43% of female-headed households lived in poverty in 2011.
- Without intervention, many of their children will never escape. And neither will their children.



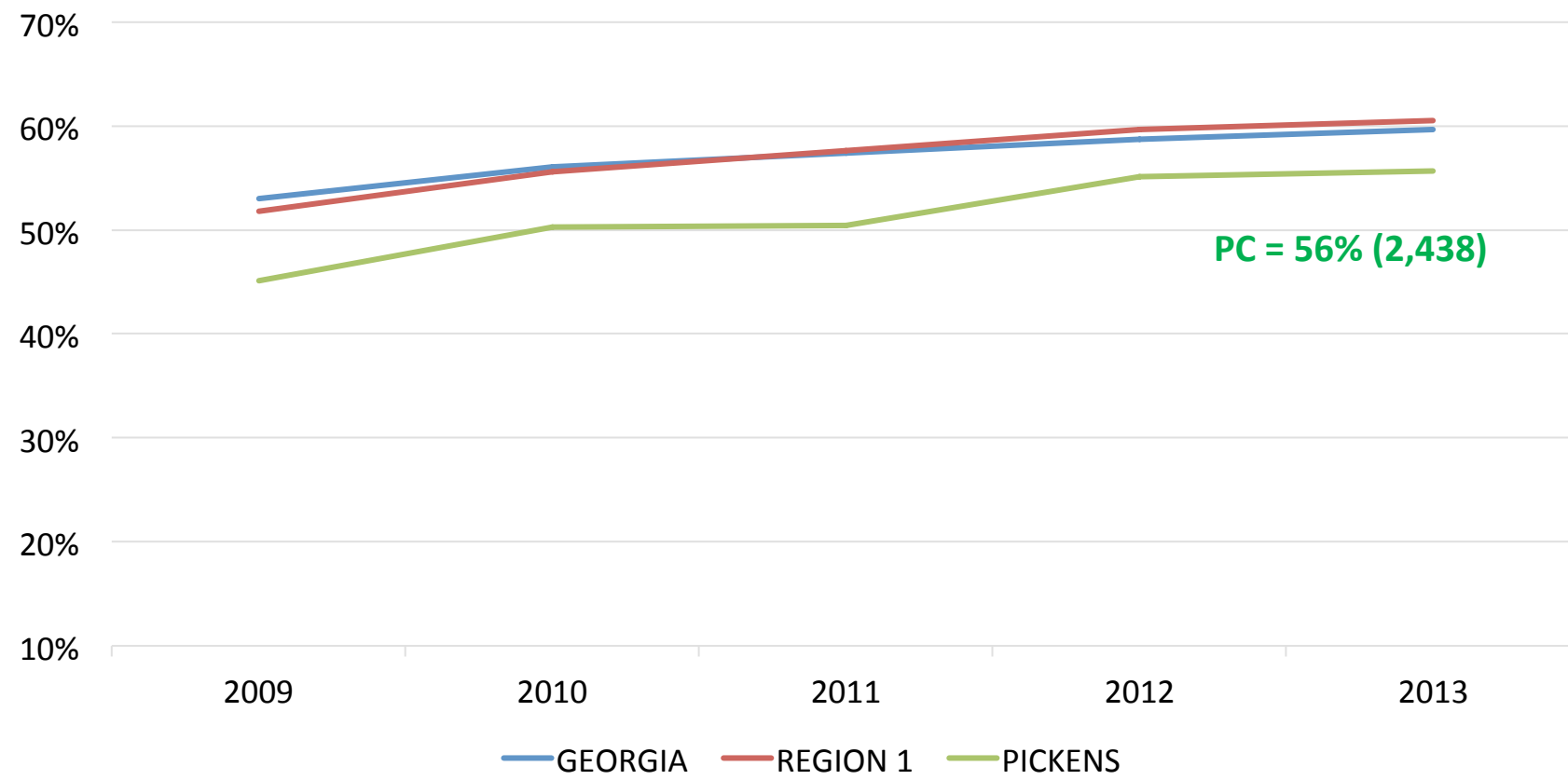
CHILDREN LIVING IN POVERTY



Pickens County Ranked # 33

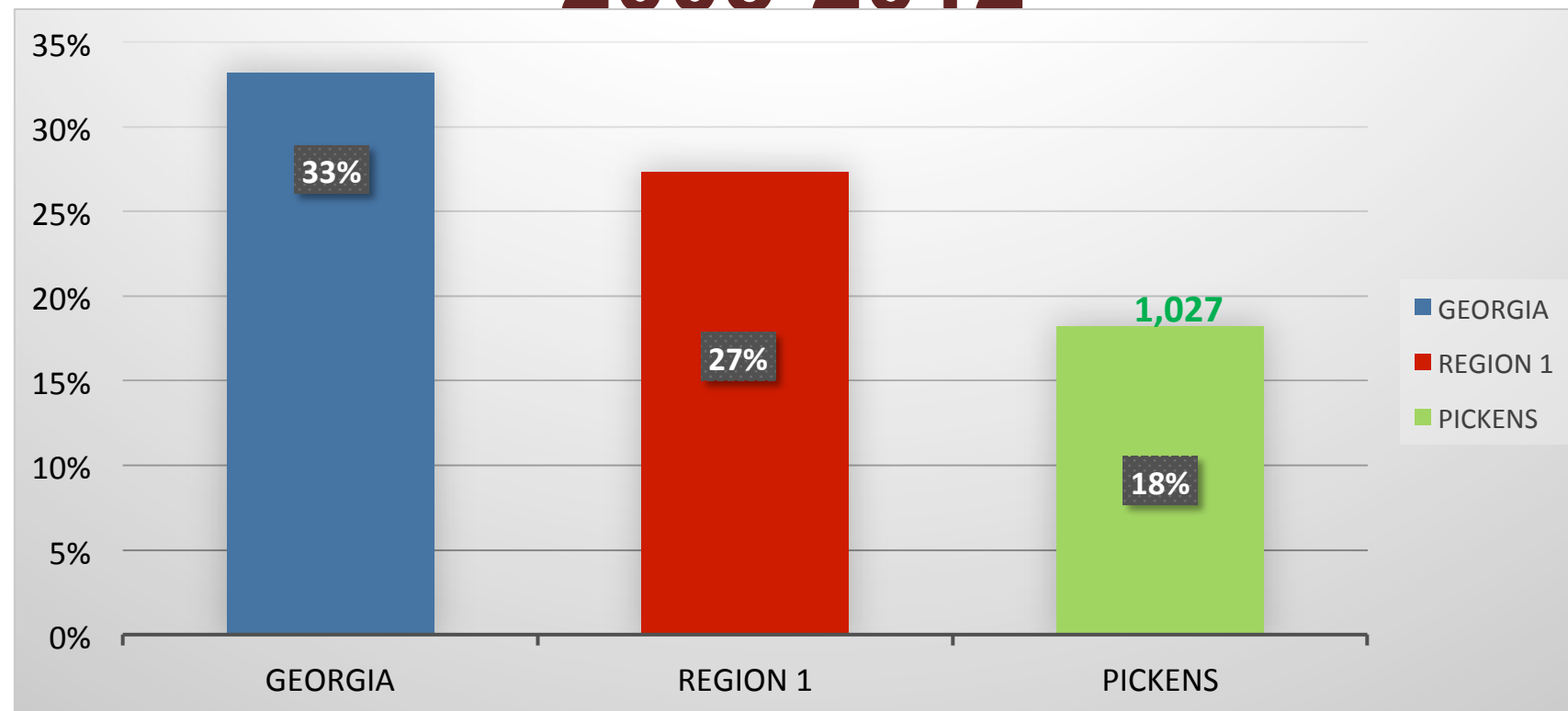
2012: US = 27%

STUDENTS ELIGIBLE FOR FREE OR REDUCED PRICE MEALS



Pickens County Ranked #27

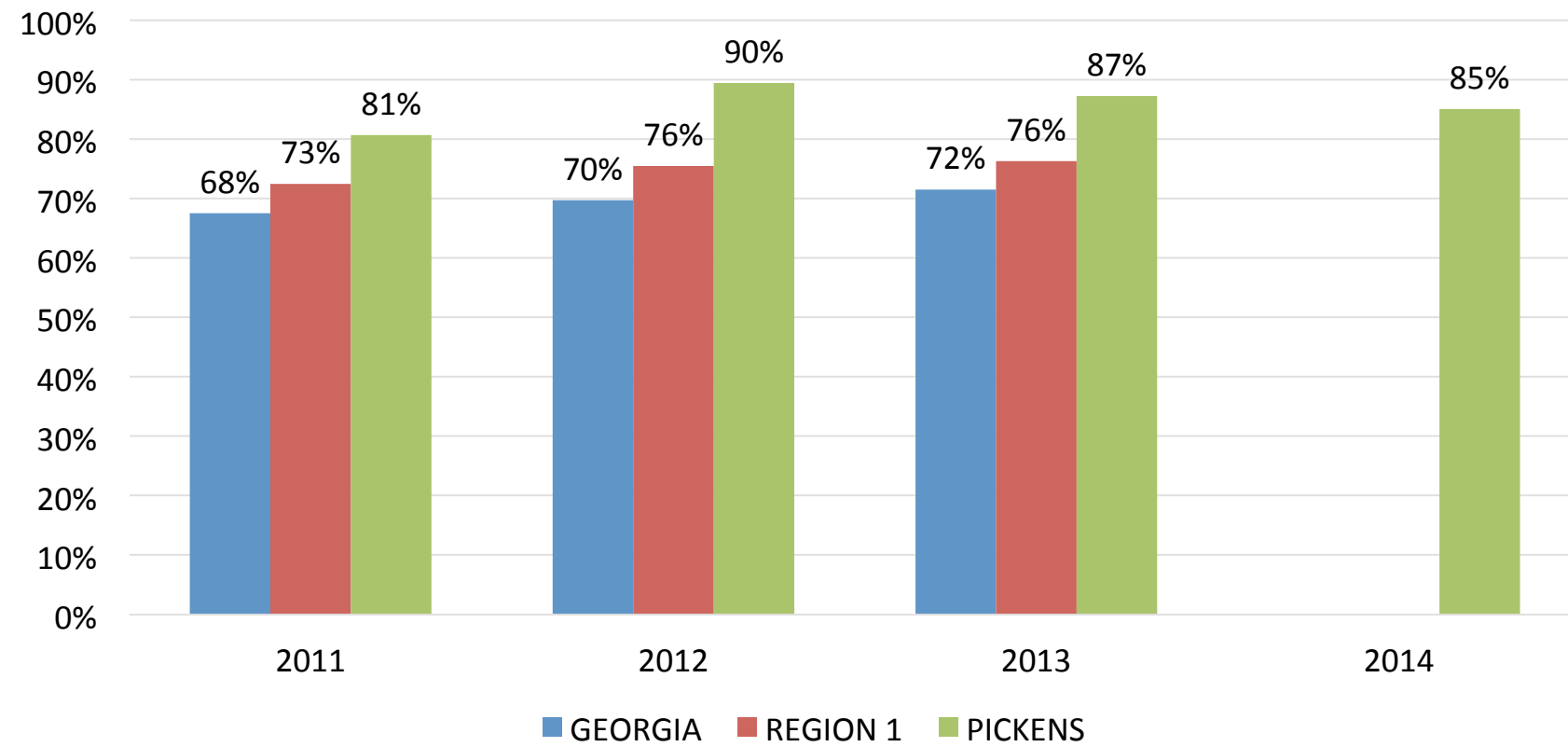
CHILDREN LIVING IN SINGLE PARENT FAMILIES 2008-2012



Pickens County Ranked # 5

2012: US = 26%

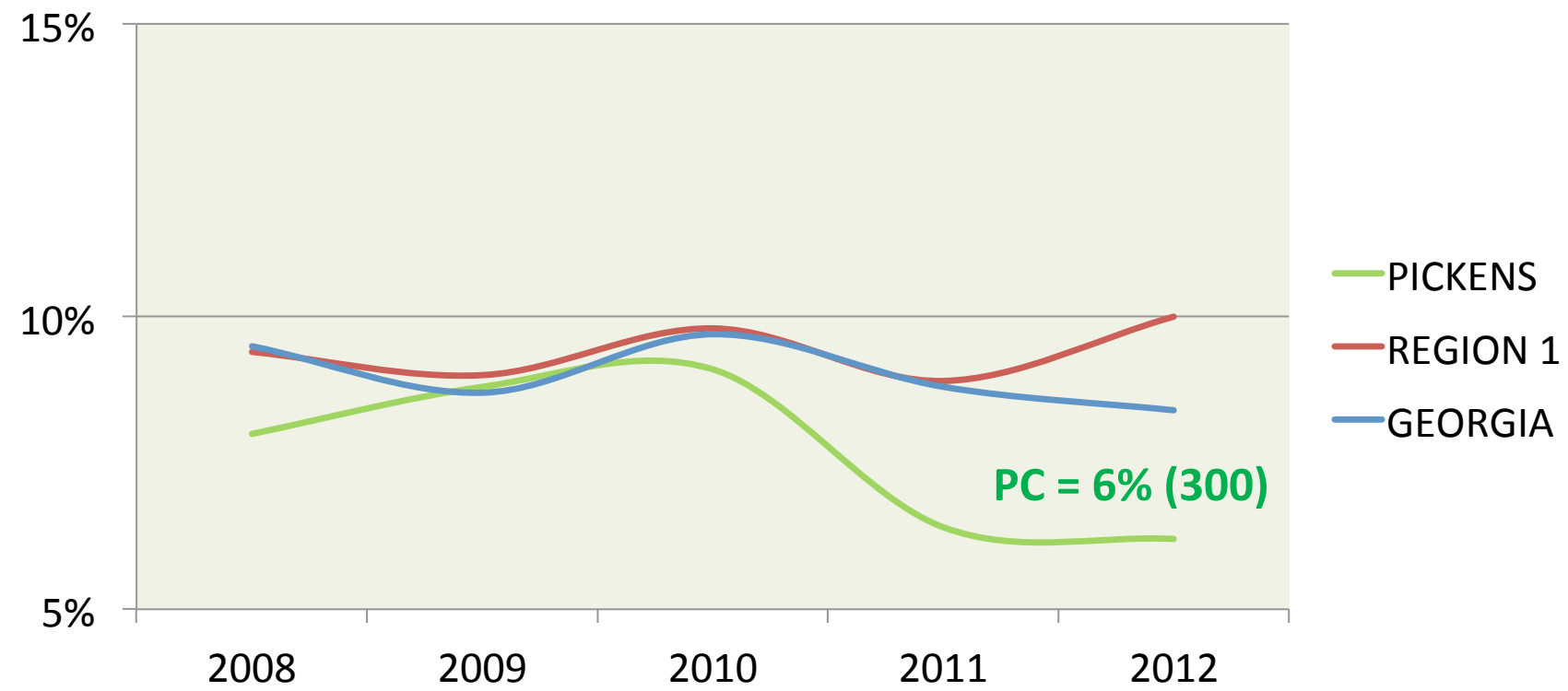
STUDENTS WHO GRADUATE FROM HIGH SCHOOL ON TIME



Pickens County Ranked #13

2012: US = 81%

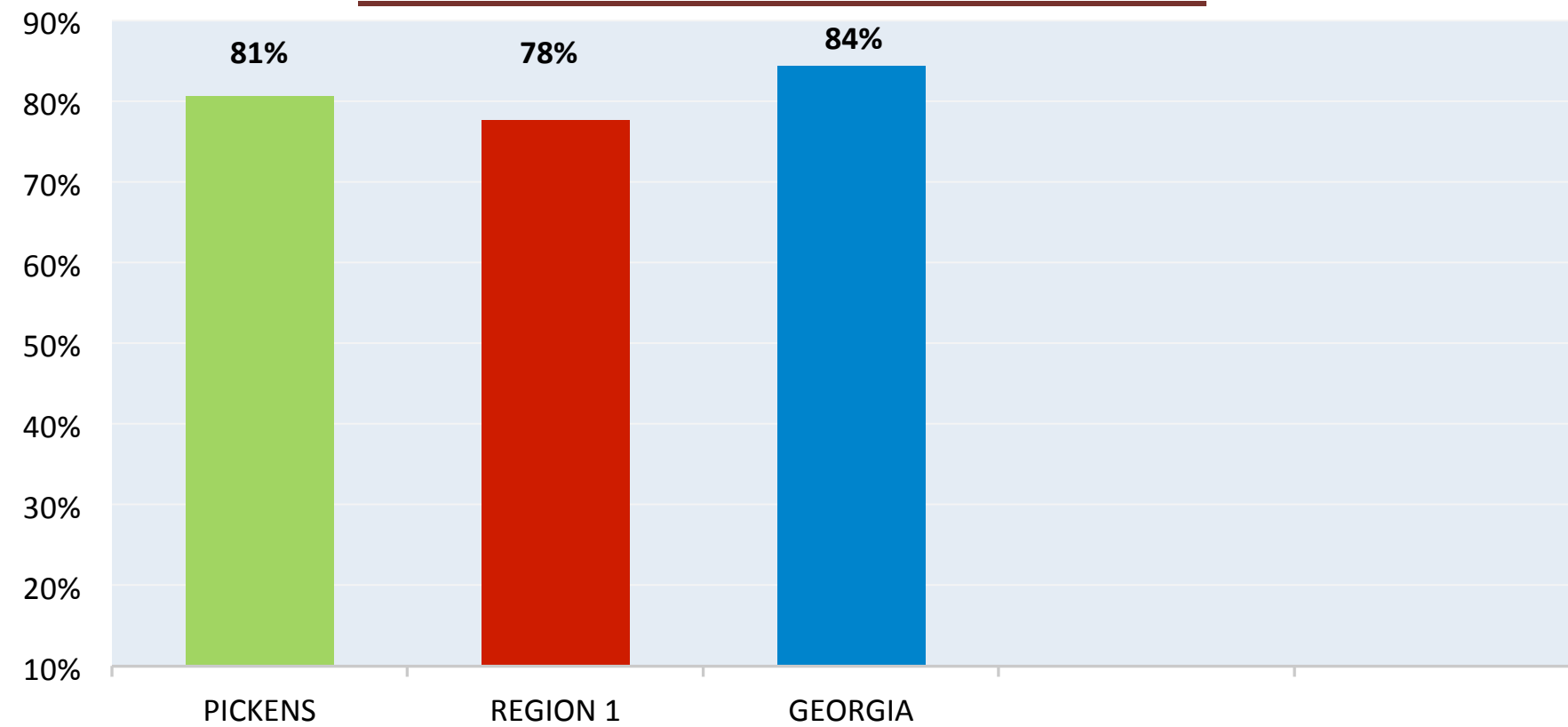
CHILDREN ABSENT MORE THAN 15 DAYS FROM SCHOOL



PC = 6% (300)

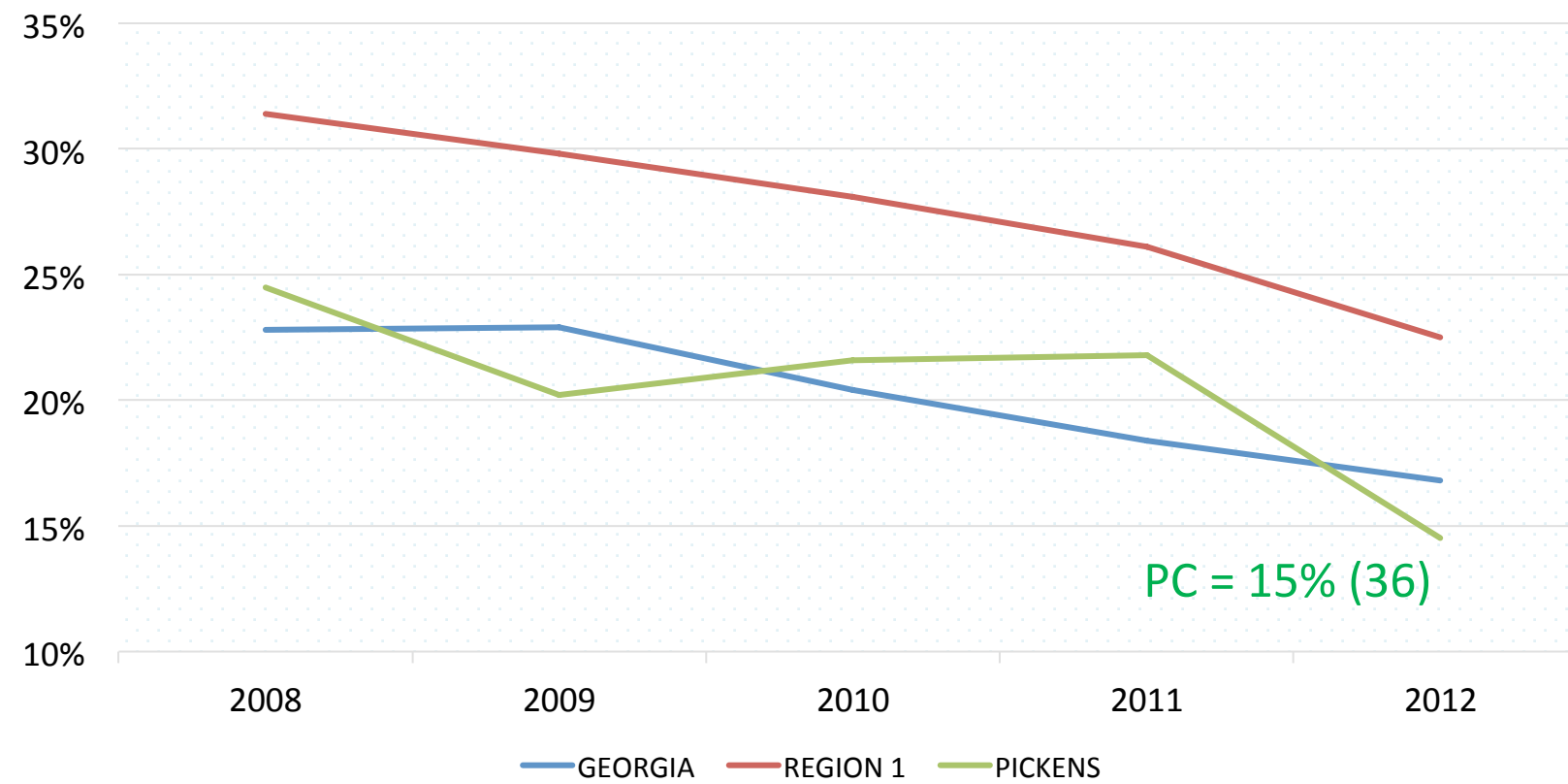
PICKENS IS RANKED #69

ADULTS THAT ARE HIGH SCHOOL GRADUATE OR HIGHER 2008-2012



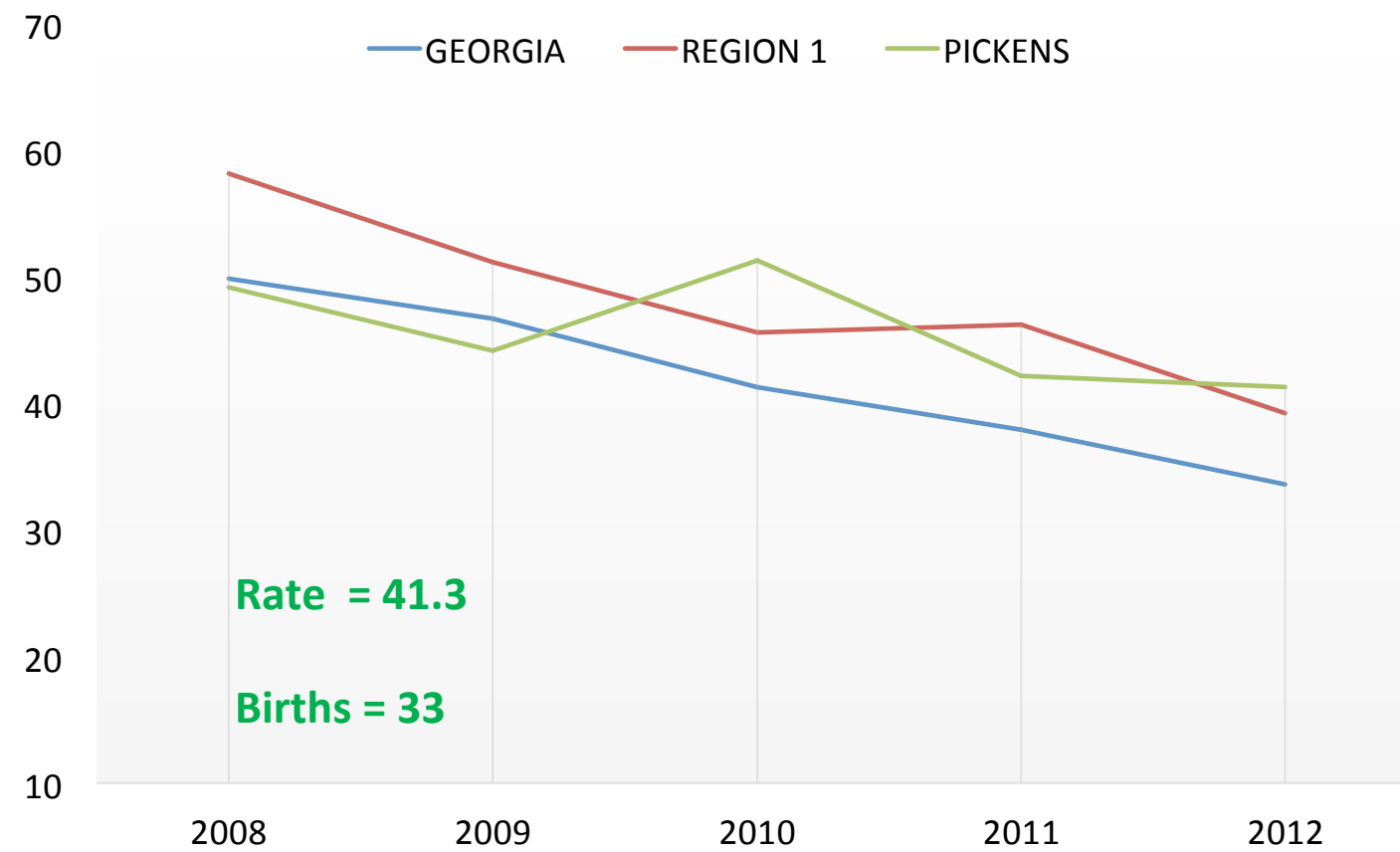
Pickens County Rank #54

BABIES BORN TO MOTHERS WITH LESS THAN 12 YEARS OF EDUCATION



Pickens County Ranked #35

PICKENS COUNTY TEEN BIRTHS, AGES 15-19 (PER 1,000)



Rate = 41.3

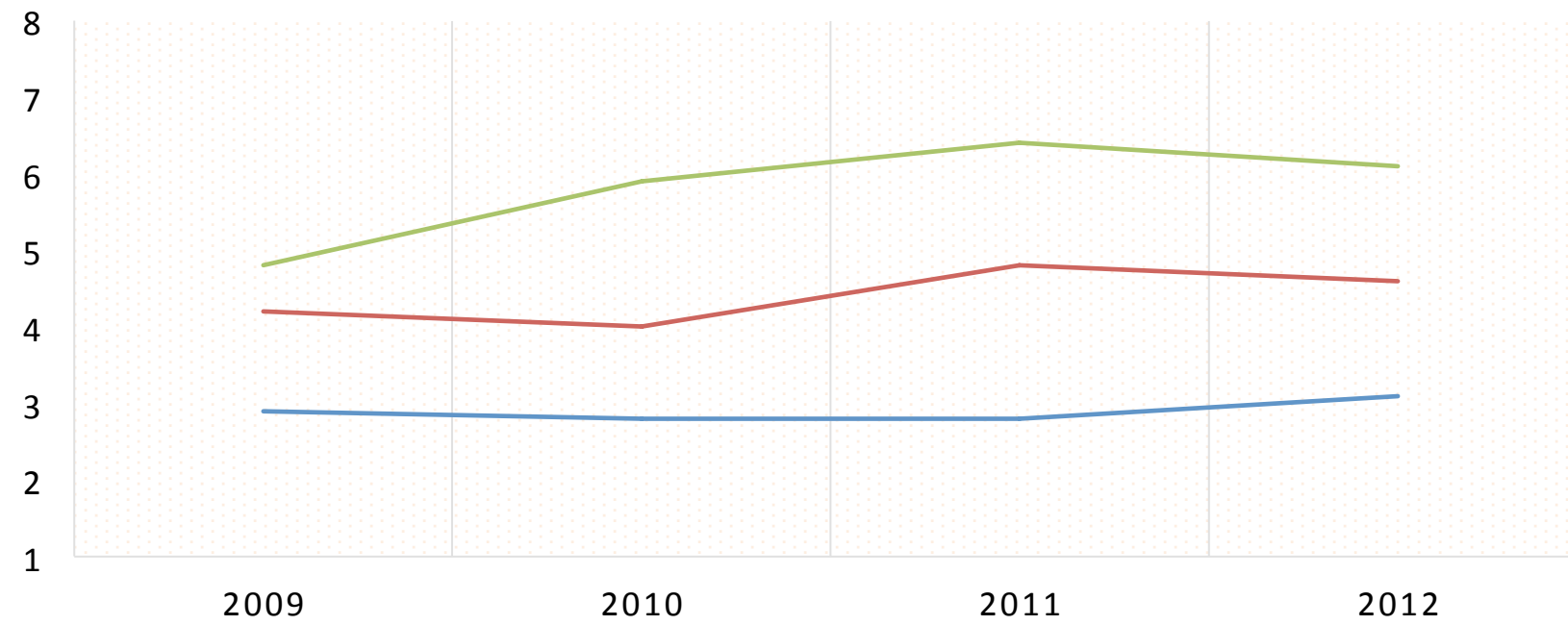
Births = 33

Pickens County Ranked #61

2012: US = 29

CHILD ABUSE (PER 1,000)

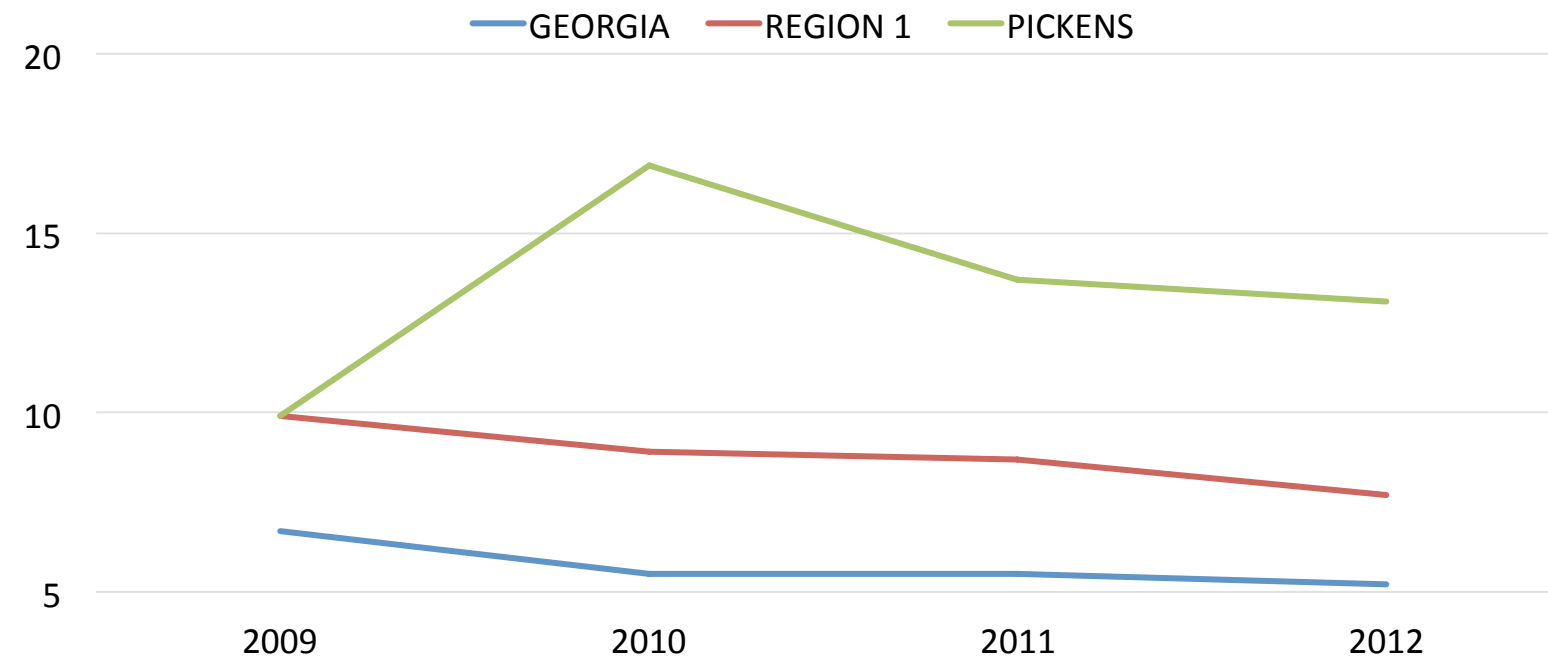
— GEORGIA — REGION 1 — PICKENS



<u>Abuse</u>	<u>2009</u>	<u>2010</u>	<u>2011</u>	<u>2012</u>
# cases	32	39	41	38
Rate per 1,000	4.8	5.9	6.4	6.1

PICKENS RANKED #113

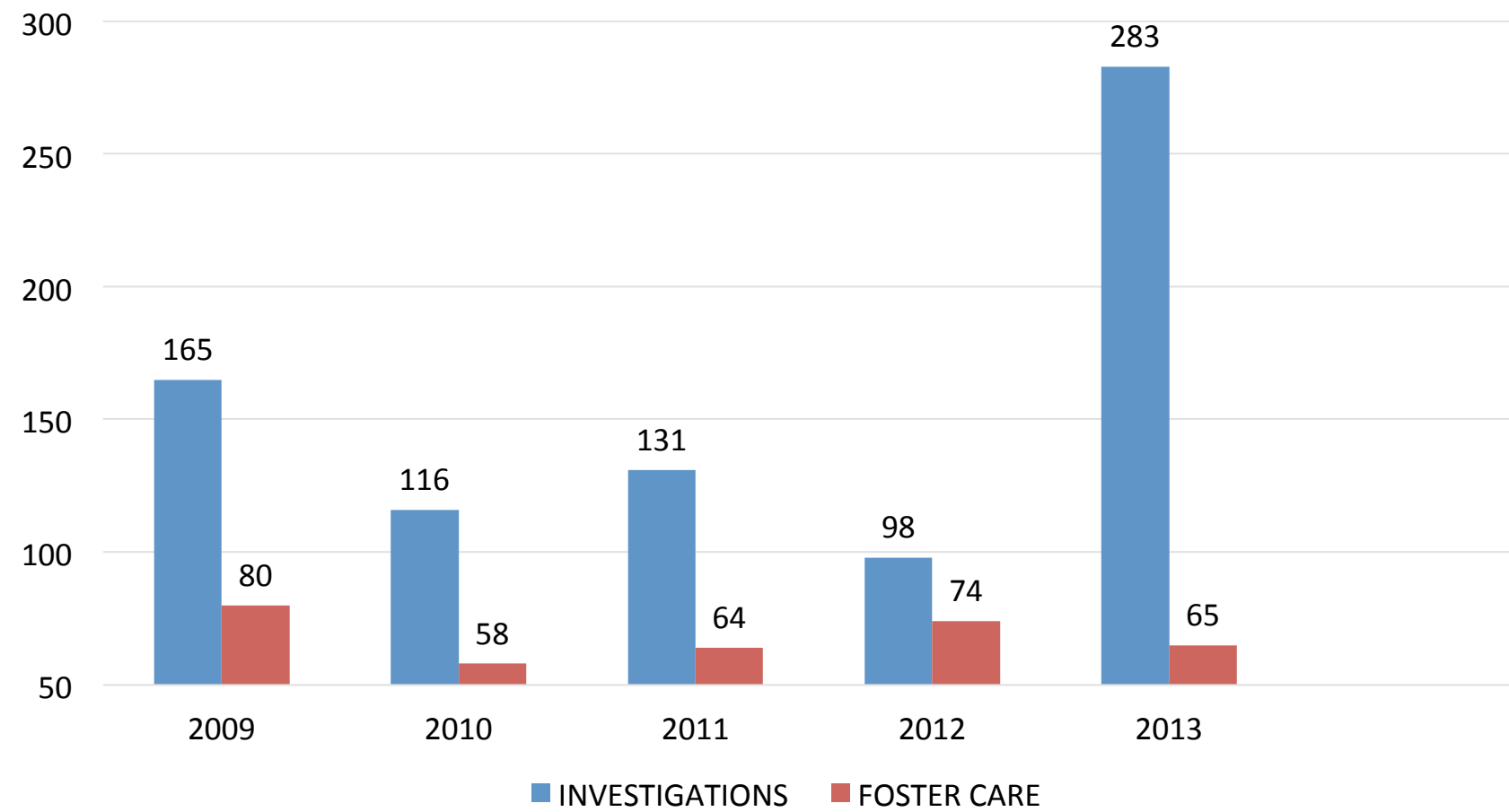
CHILD NEGLECT (PER 1000)



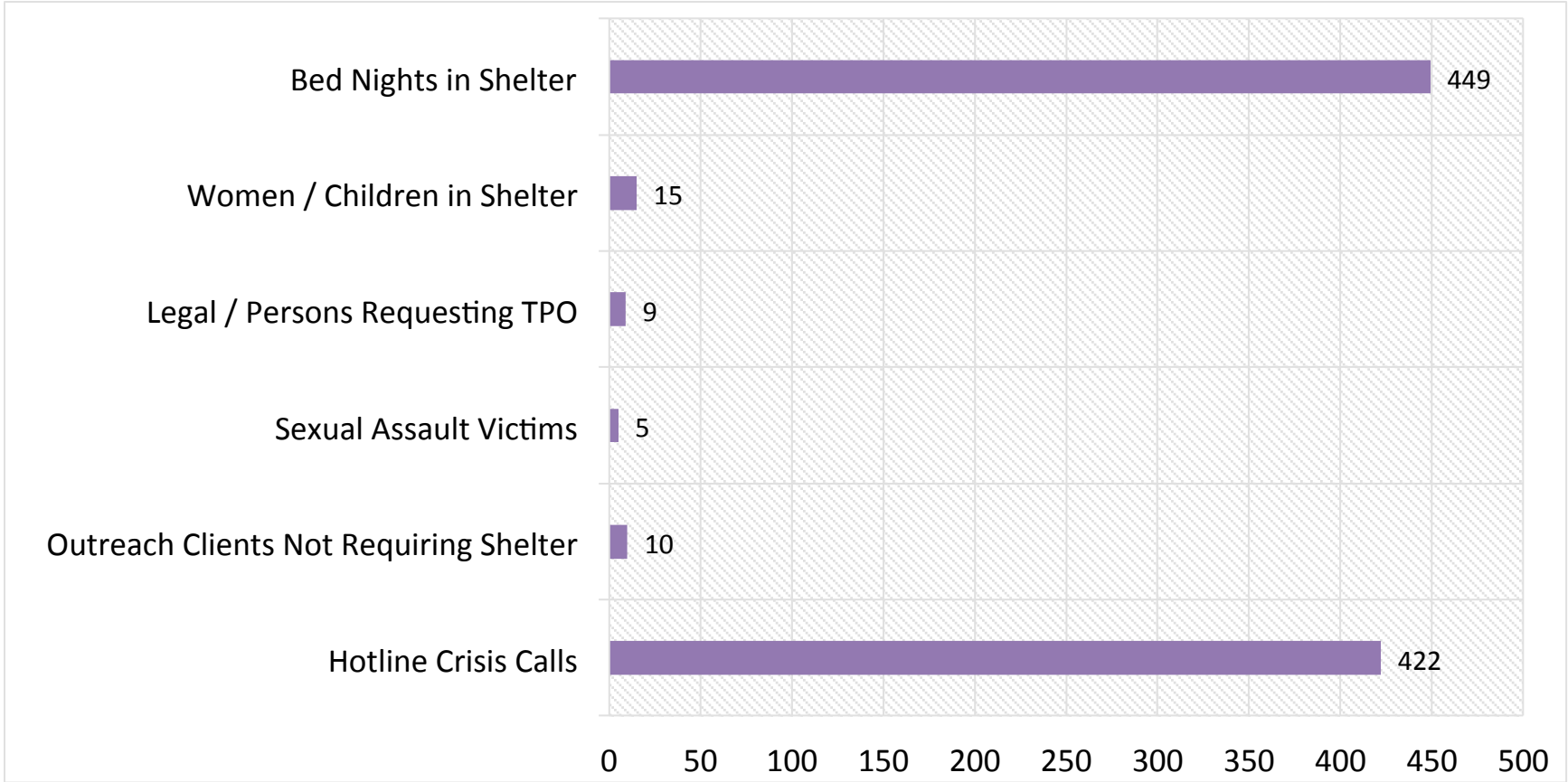
<u>Neglect</u>	<u>2009</u>	<u>2010</u>	<u>2011</u>	<u>2012</u>
# cases	66	112	88	82
Rate per 1,000	9.9	16.9	13.7	13.1

PICKENS RANKED #138

CHILDREN INVOLVED IN CPS INVESTIGATIONS AND FOSTER CARE IN PICKENS COUNTY

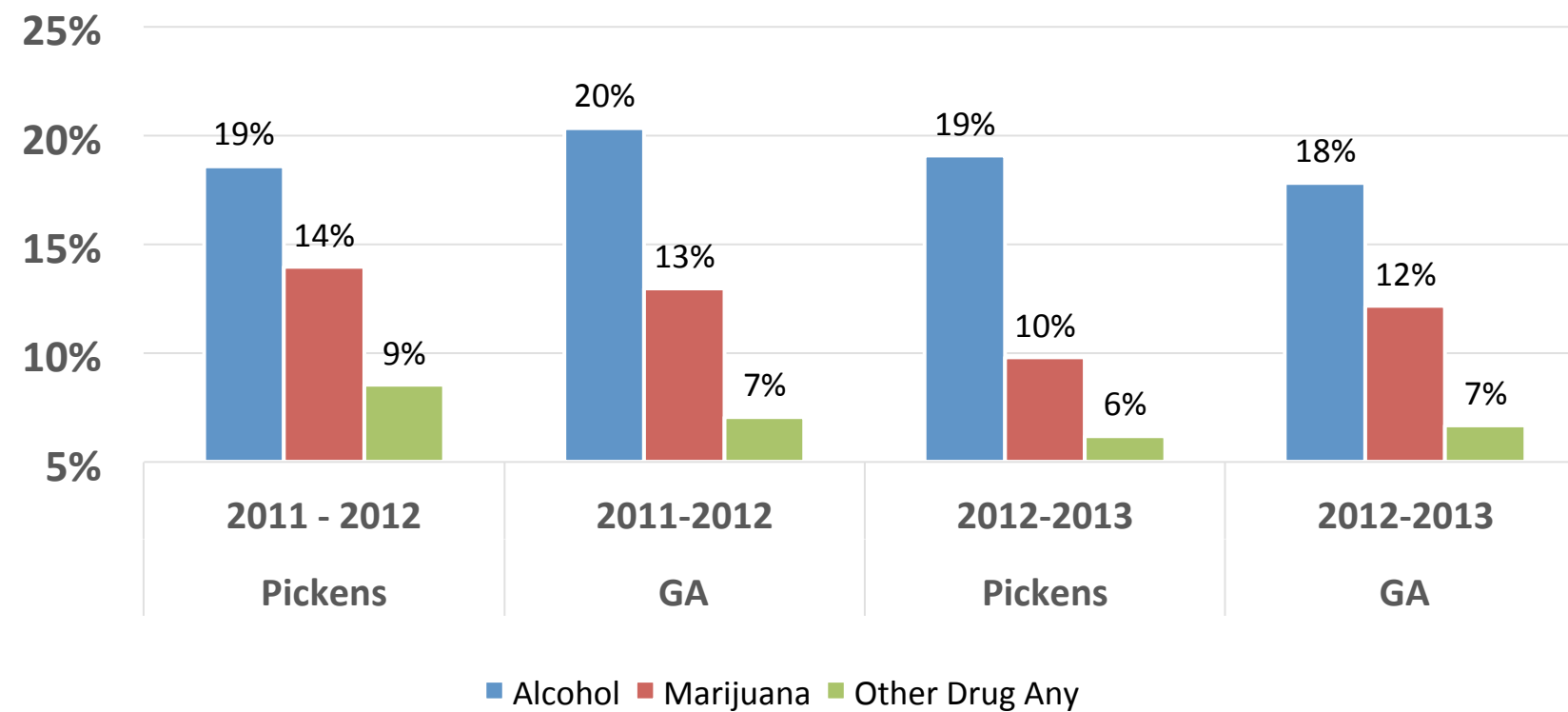


PICKENS DOMESTIC VIOLENCE SUMMARY
North Georgia Mountain Crisis Network
January 1, 2014 – November 30, 2014



Excludes calls to Cherokee County Crisis Center

Substance Used in Past 30 Days by Pickens County 10th Graders



2010 – 11: US = 7% (**teens** who abuse alcohol or drugs)

GENERATIONAL POVERTY

- Challenge: Identify families and factors contributing to generational poverty and develop programs for education and intervention



TO BE CONTINUED.....

